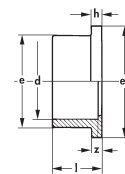


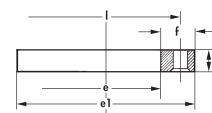
## BUNDBUCHSE FLACH – Klebemuffe

d	DN	e1	h	l	z	Art.-Nr.	€
20	15	34	6	19	3	10.113.001	1,25
25	20	41	7	22	3	10.113.002	1,25
32	25	50	7	25	3	10.113.003	1,50
40	32	61	8	29	3	10.113.004	2,25
50	40	73	8	34	3	10.113.005	3,50
63	50	90	9	41	3	10.113.006	5,85
75	65	106	10	47	3	10.113.007	8,85
90	80	125	11	56	5	10.113.008	11,00
110	100	150	12	66	5	10.113.009	14,15
140	125	188	14	81	5	10.113.010	33,95
160	150	213	16	91	5	10.113.011	37,90



## FLANSCH ND 10

d	DN	e1	h	l	z	Löcher	Art.-Nr.	€
20	15	95	11	65	14	4	10.120.001	5,45
25	20	105	12	75	14	4	10.120.002	5,95
32	25	115	15	85	14	4	10.120.003	6,85
40	32	140	16	100	18	4	10.120.004	9,65
50	40	150	17	110	18	4	10.120.005	10,45
63	50	165	19	125	18	4	10.120.006	11,25
75	65	185	20	145	18	4	10.120.007	16,25
90	80	200	22	160	18	8	10.120.008	18,15
110	100	220	24	180	18	8	10.120.009	22,65
140	125	250	30	210	18	8	10.120.010	38,10
160	150	285	34	240	22	8	10.120.011	43,70
225*	200	345	32	295	22	8	10.120.012	104,90
280*	250	399	32	350	22	12	10.120.013	230,50
315*	300	450	34	400	22	12	10.120.014	259,25



\* Lieferzeit auf Anfrage

## Ü-MUFFENNIPPEL – Klebemuffe, Klebestutzen, Rohraußengewinde

d1	d	G	DN	DN1	c	l	z	Art.-Nr.	€
12	16	3/8"	8	10	19	34	22	10.121.001	1,50
16	20	1/2"	10	15	24	41	27	10.121.002	1,60
20	25	1/2"	15	20	28	42	26	10.121.003	1,70
20	25	3/4"	15	20	30	47	31	10.121.004	1,75
25	32	3/4"	20	25	34	48	29	10.121.005	1,75
25	32	1"	20	25	36	53	34	10.121.006	2,00
32	40	1"	25	32	42	54	32	10.121.007	2,20
32	40	1 1/4"	25	32	46	60	38	10.121.008	3,10
40	50	1 1/4"	32	40	51	64	38	10.121.009	3,20
40	50	1 1/2"	32	40	55	66	40	10.121.010	4,35
50	63	1 1/2"	40	50	62	74	43	10.121.011	4,40
50	63	2"	40	50	65	78	47	10.121.012	4,95
63	75	2"	50	65	76	85	47	10.121.013	6,45
63	75	2 1/2"	50	65	78	93	55	10.121.014	12,90
75	90	2 1/2"	65	80	92	102	58	10.121.015	16,60
75	90	3"	65	80	93	102	58	10.121.016	17,85
90	110	3"	80	100	112	110	70	10.121.017	20,40
90	110	4"	80	100	115	118	80	10.121.018	25,45

